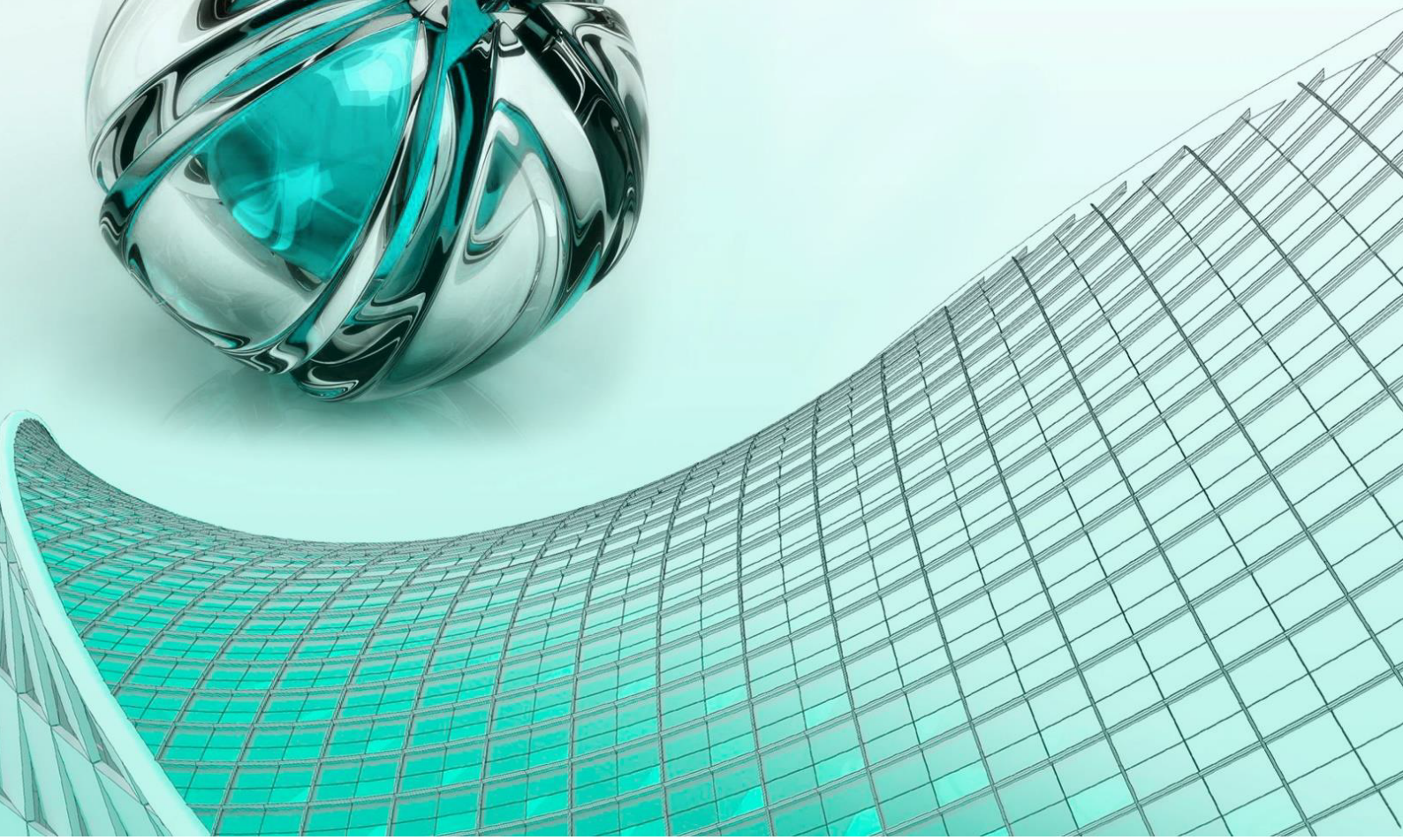




CADMATE

Your Reliable CAD Partner

THE NEXT GENERATION
CAD SOFTWARE



CADMATE 2018 Installation Guide

Users can visit www.cadmate.org to download CADMATE 2018 to your computer or server.

CADMATE 2018 Install Wizard will guide the user to install the software in the operating system completely and successfully.

Please follow the steps below to install CADMATE 2018:

1. - Double-click the executable file downloaded and the "CADMATE Install Wizard" dialog box will pop up. Click "Browse" and choose the destination path where setup will install the files and then click the "Options" button. See Figure 1-1.

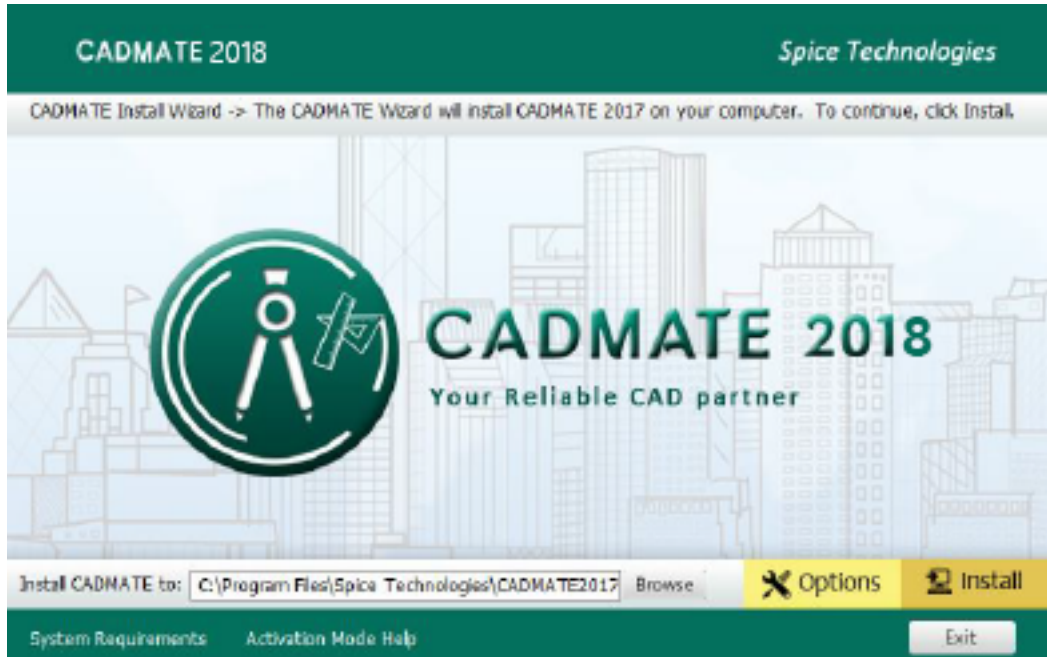


Figure 1-1

2. - In the "CADMATE Install Wizard->Option" dialog box, Users can select or deselect the features according to your need. Click the "Next" button. See Figure 1-2

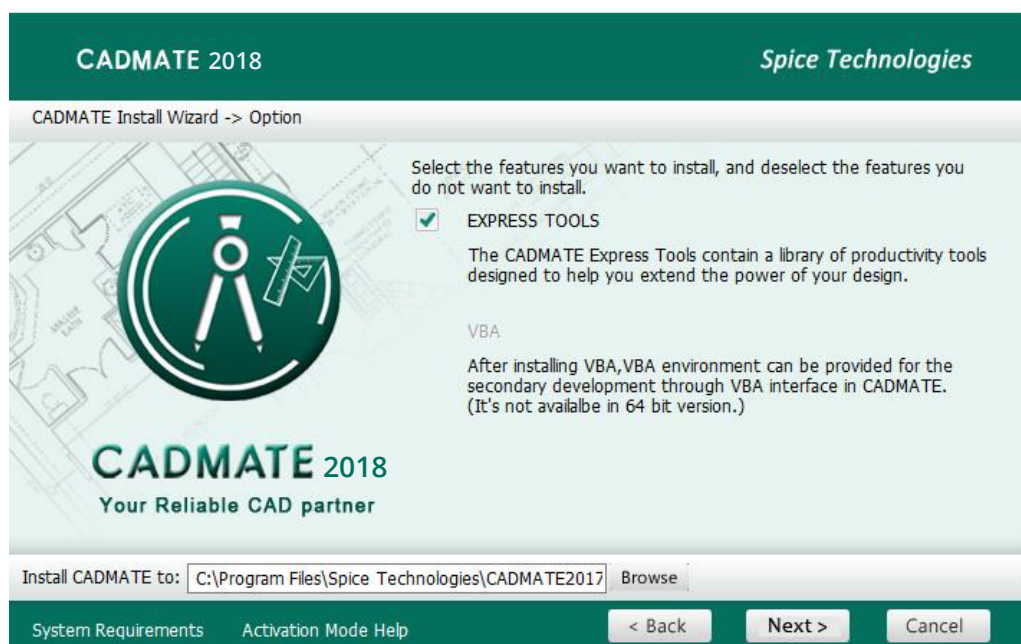


Figure 1-2

3. - Confirm the path and click the "Install" button to continue. See Figure 1-3.

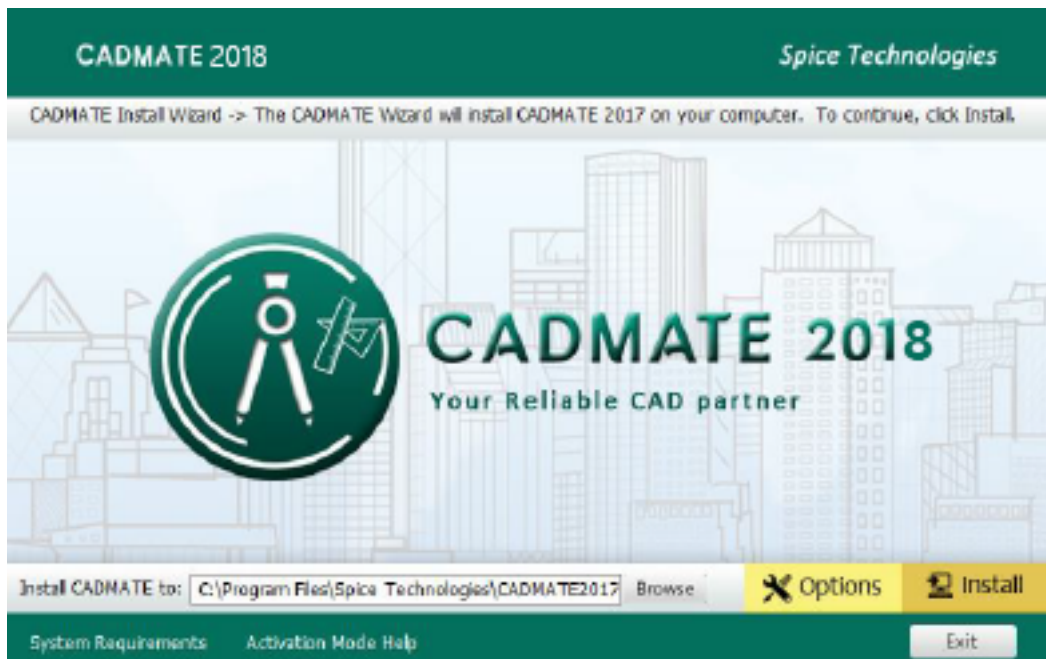


Figure 1-3

4. - The "CADMATE Install Wizard->License" dialog box is displayed. If you agree with the license agreement, check "Accept the terms of the license agreement" and click the "Next" button.

See Figure 1-4.

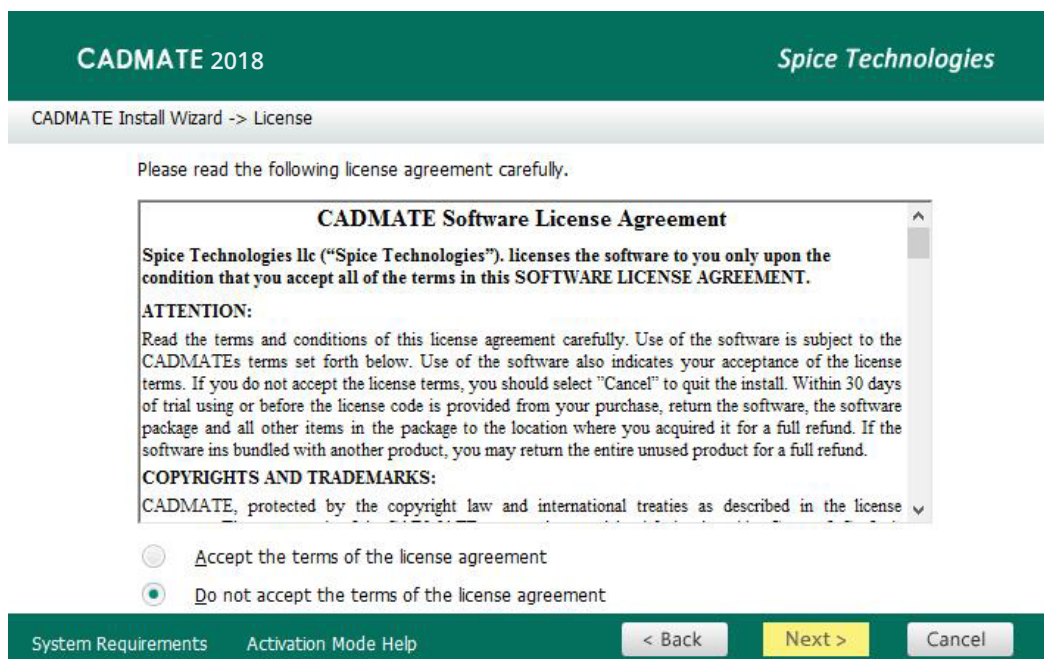


Figure 1-4

5. - Then the wizard is ready to begin the program installation. If you want to review or change any of your installation settings just click the " **Back**" button. Click the " **Install**" button to continue the installation. See Figure 1-5

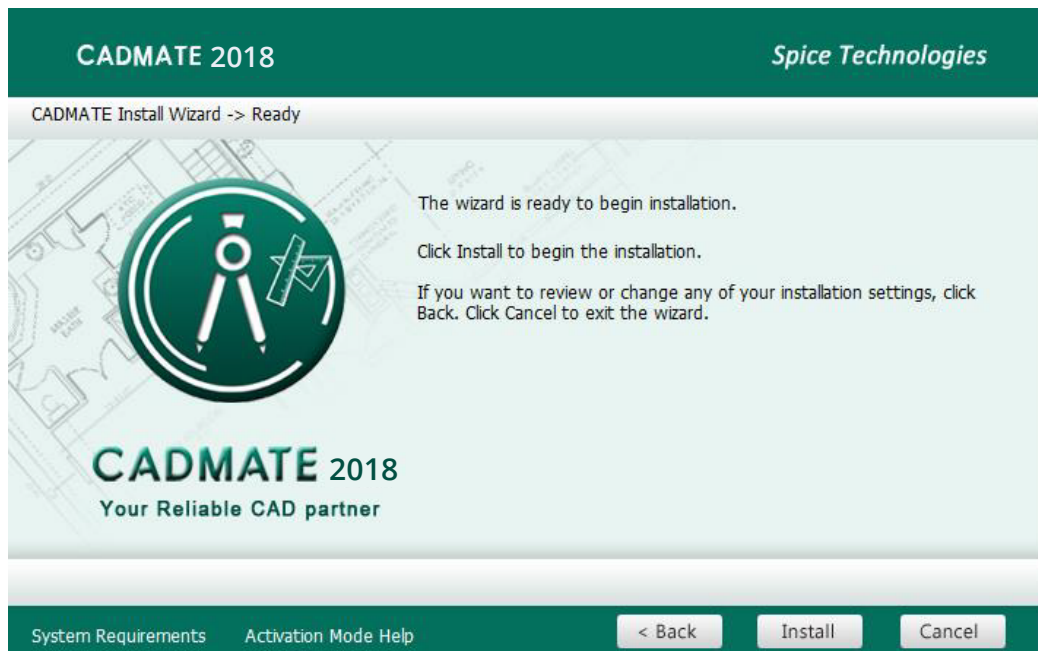


Figure 1-5

6. - Then you will see the workspace selection window. Select your favorite workspace and click the " **Finish**" button to exit the wizard , The CADMATE wizard has successfully installed CADMATE2018. See Figure 1-6.

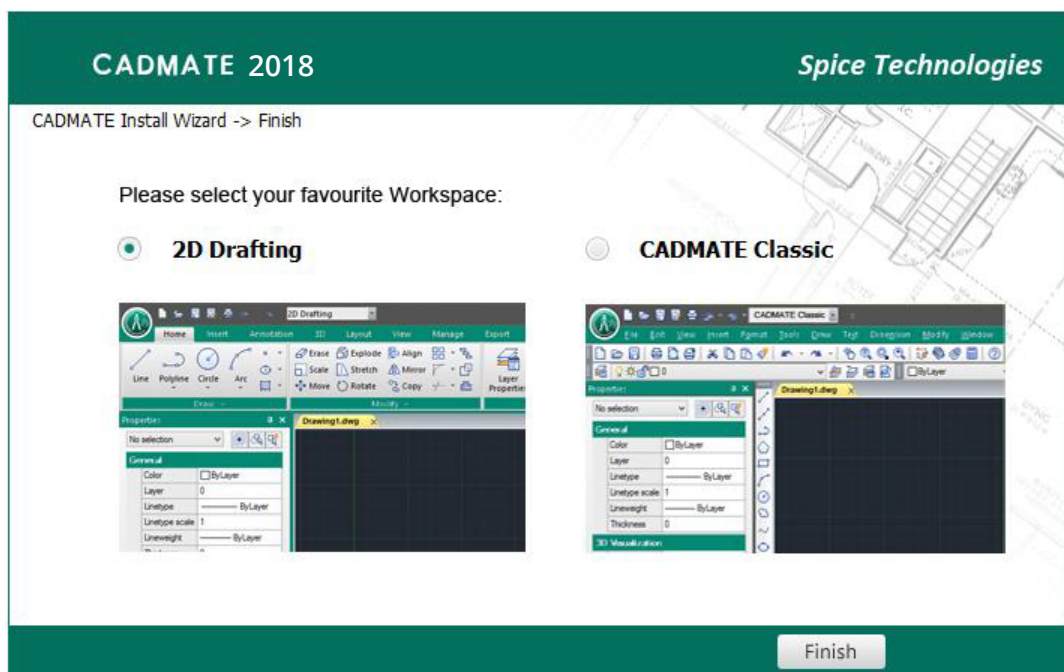


Figure 1-6

Remark: In CADMATE 2018, AutoXlsTable has a separate installation package, you need to install it if your Microsoft Office is 2007(32 bit) or 2010(32 /64-bit) when you meet with problem in AutoXlsTable in Express tools tab.

Please follow the steps below to install AutoXlsTable:

1. - Double-click the executable file downloaded and the "AutoXlsTable_InstallShield Wizard" dialog box will pop up. Click "**Next**" to continue. See Figure 2-1.

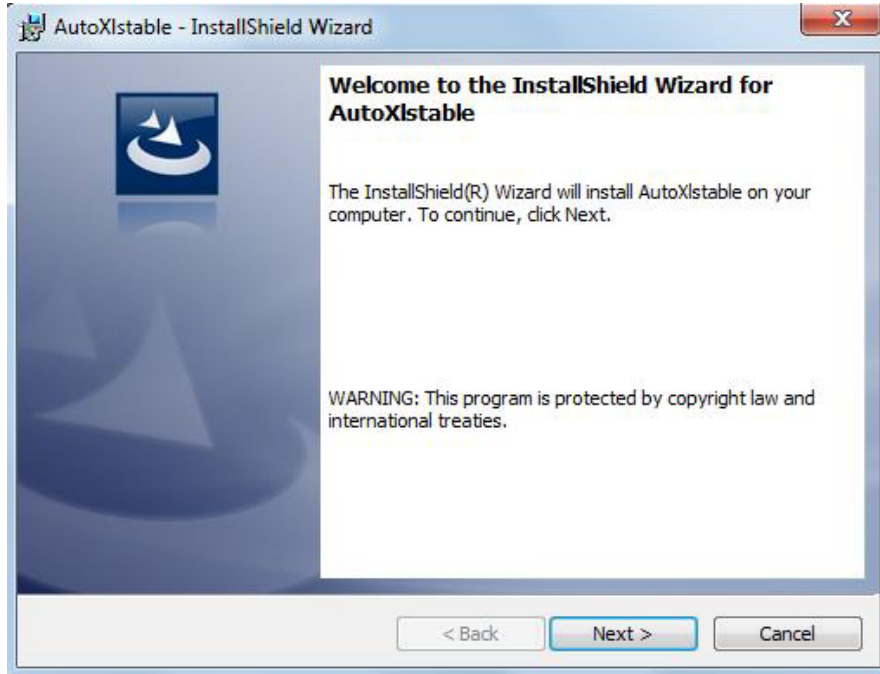


Figure 2-1

2. - Select the version of your Microsoft Office and click "**Next**". See Figure 2-2.

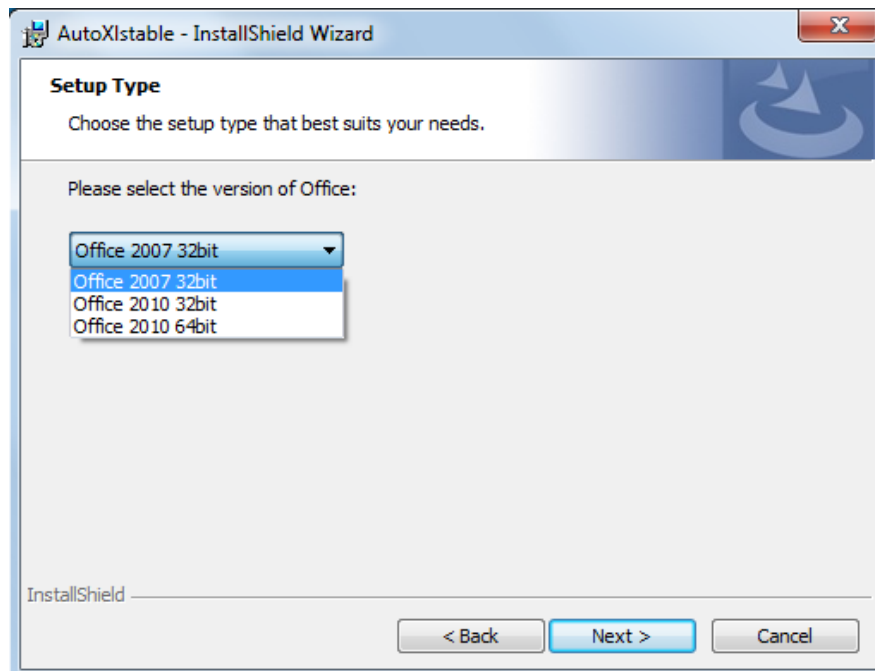


Figure 2-2

3. - Click Install to start the AutoXlsTable installation, if you would like to review or modify your Microsoft office version, click back button to return to the previous step. See Figure 2-3.

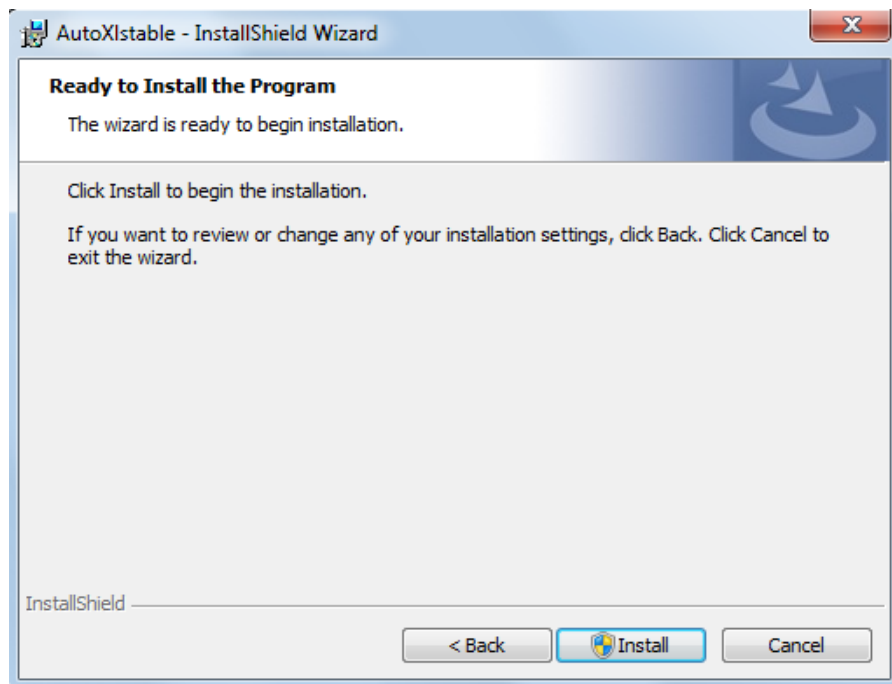


Figure 2-3

4. - Then the Install Shield Wizard prompts you successfully finish installing AutoXlsTable, Click 'Finish' button to exit the wizard. See Figure 2-4.

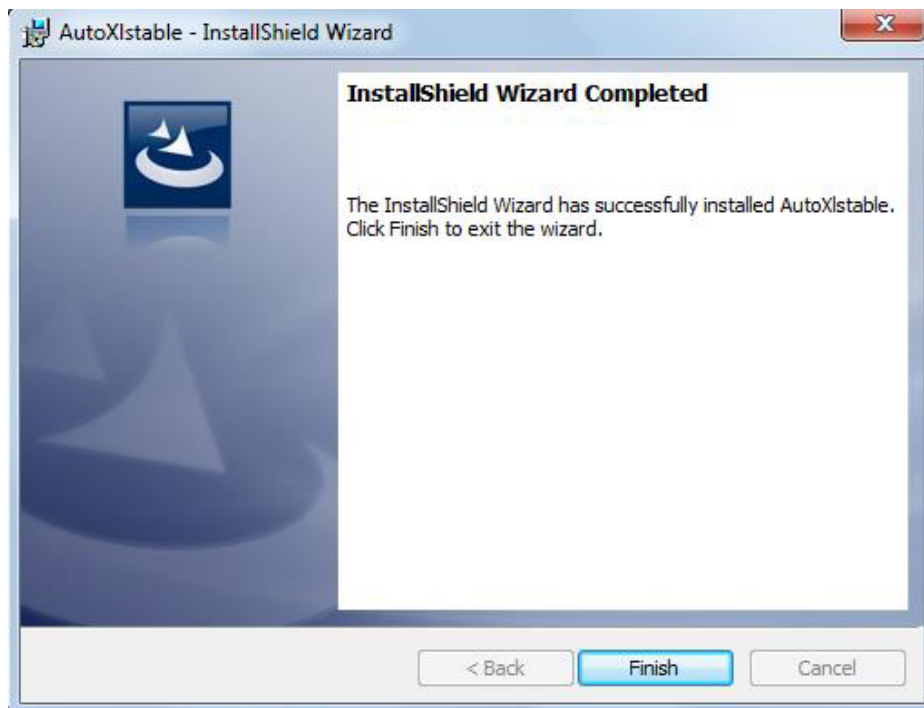


Figure 2-4